



MONTHLY MEMBERSHIP PROGRESS REPORT

District 321B1

Results as of: 04/30/2019

GMT: ANIL TULSYAN

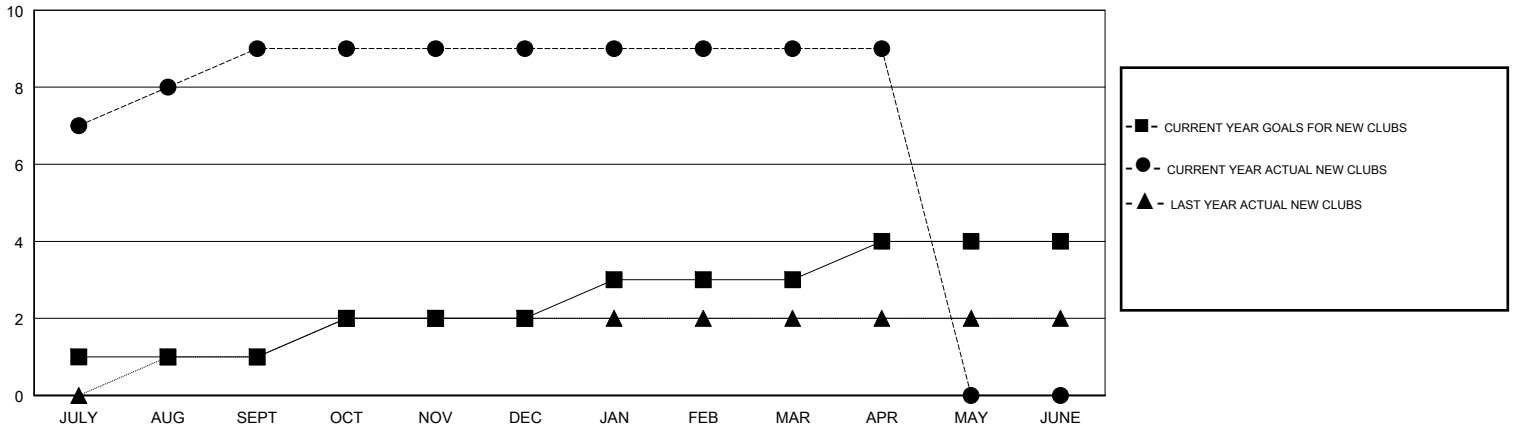
LOCATION INDIA

GMT CA

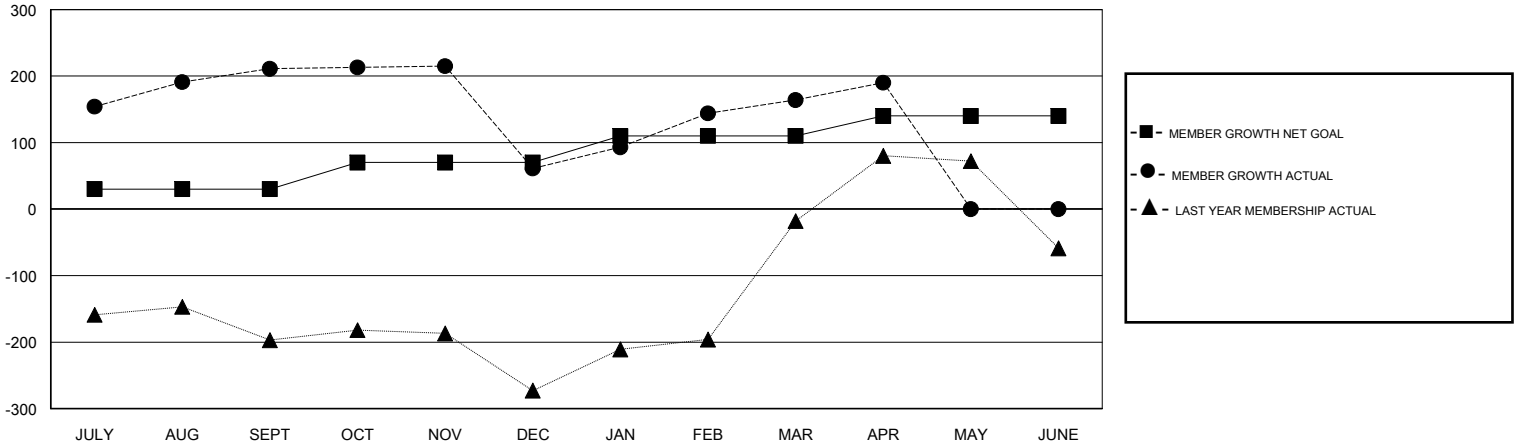
Clubs			
RESULTS FOR 2018-2019			
QUARTER	NEW CLUB GOAL	NEW CLUBS	DROPPED CLUBS
JULY/AUG/SEPT	1	9	0
OCT/NOV/DEC	1	0	6
JAN/FEB/MAR	1	0	0
APR/MAY/JUNE	1	0	0

Members			
RESULTS FOR 2018-2019			
QUARTER	MEMBER GROWTH NET GOAL	MEMBER GROWTH ACTUAL	DROPPED MEMBERS ACTUAL (including transfers)
JULY/AUG/SEPT	30	301	54
OCT/NOV/DEC	40	30	178
JAN/FEB/MAR	40	141	5
APR/MAY/JUNE	30	35	7

GOALS AND ACTUAL NEW CLUBS CUMULATIVE



GOALS AND ACTUAL MEMBERS CUMULATIVE



DROPPED CLUBS: 6	40 CLUBS OF 95 ADDED 1 OR MORE NEW MEMBERS	<u>GENDER DISTRIBUTION</u> MALE 1,763 (56.89%) FEMALE 1,336 (43.11%) Women Percentage Fiscal Year Goal: 45%
<u>DROPPED MEMBERS</u> DECEASED 4 CLUB CANCELLED 105 OTHER 135 TOTAL 244	CLICK HERE FOR CUMULATIVE MEMBERSHIP DATA	TOTAL FAMILY UNIT MEMBERS 1,905 FAMILY MEMBERS PAYING HALF DUES 1,024